



OpenText Report & Output Management Interface for Microsoft® SharePoint®

Make SharePoint the single point of access for all report content

OpenText Report & Output Management Interface for Microsoft® SharePoint® is an Enterprise Information Management (EIM) solution that captures and stores critical information from packaged applications like Oracle® E-Business Suite, PeopleSoft®, and SAP® ERP, as well as custom, mainframe, or legacy applications, and makes this information available to Microsoft SharePoint.

Many organizations have come to rely on Microsoft SharePoint as a primary access point for enterprise information. Business users love the simplicity of it. IT enjoys the hands-off, self-service approach it enables the staff. Moreover, CIOs and CTOs like the fact that Microsoft SharePoint fits with the organization's overall infrastructure. These same organizations often have extensive

report content and are looking for ways to utilize SharePoint to better connect report content with people and processes.

With Report & Output Management Interface for SharePoint, fixed content is captured into an electronic archive, enabling increased extensibility for end users consuming and working with report information.

KEY BENEFITS

Mainframe-enable Microsoft SharePoint

- Capture, ingest, and enable access to mainframe-generated content not natively supported by SharePoint
- Reduce IT backlog associated with custom report generation

Leverage the Microsoft SharePoint experience

- Consolidated access to all content, including mainframe and ERP report output through a single SharePoint portal

Electronic bill and statement presentment

- Leverage SharePoint to offer self-service access to bills, statements, invoices, and other documents
- Logical views of content segmented by page

Regulatory compliance

- Leverages the retention, accessibility, and auditability of fixed content managed in a compliant repository

SharePoint users now have the capability to search and access reports directly from the SharePoint UI. The search can optionally utilize indexes defined based on content of reports. Online viewing capabilities include annotations, search and sub-reporting, selective printing, extraction, hyperlink access to reports, drill down, page-level security, and more.

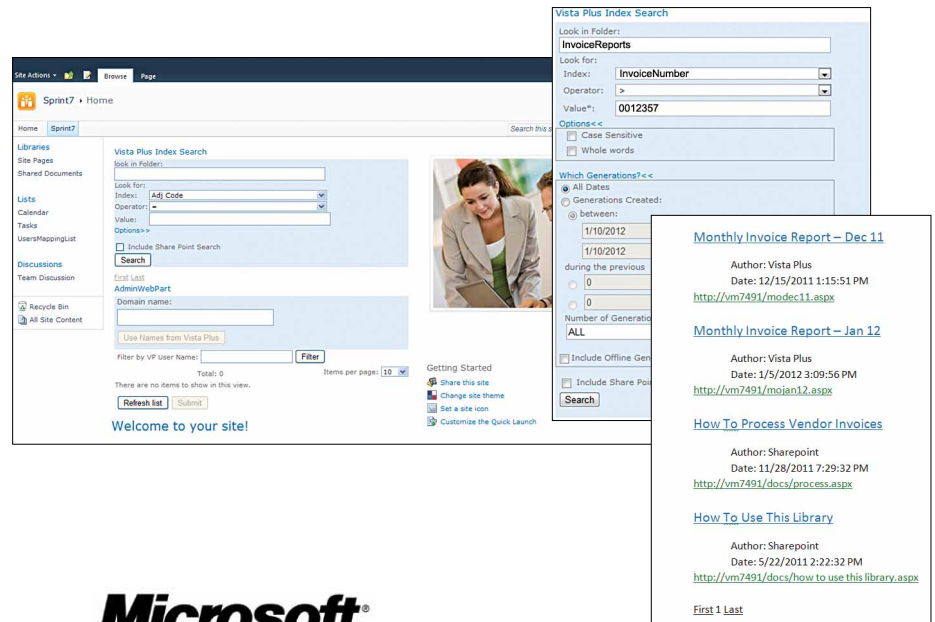
Brings mainframe reports to SharePoint users

For many organizations, there are strong business imperatives to leverage past IT investments, and nowhere is this more applicable than in unlocking the business-critical information bound up in the mainframe. Mainframe systems continue to be an integral part of most enterprises and provide enormous corporate value, but many organizations are unsure how to unlock this information for reuse.

In order to effectively leverage these investments for increased value, mainframe-based information stores need to be integrated with the distributed IT environment. It is crucial that these valuable assets be active participants in your corporate customer and self-service initiatives.

Report & Output Management Interface for SharePoint is unique in its ability to capture and ingest report output generated from "legacy" mainframes, ERP, and other large batch scheduled jobs. This seamlessly exposes mainframe report content within SharePoint, extending the content sources and data types available to SharePoint and providing a single user experience when searching or viewing mixed content. ■

A 'hit' list presents matching results to the user for further drill down and viewing. Report content is available from any location via a zero footprint within a standard browser client. In addition, users are only presented with report content that is specific to their requirements or access rights, including entire reports, report segments, or specific pages.



OpenText is a Microsoft Gold Certified partner, OpenText has won numerous Microsoft partner awards, including 2010 and 2011 ISV Partner of the Year.